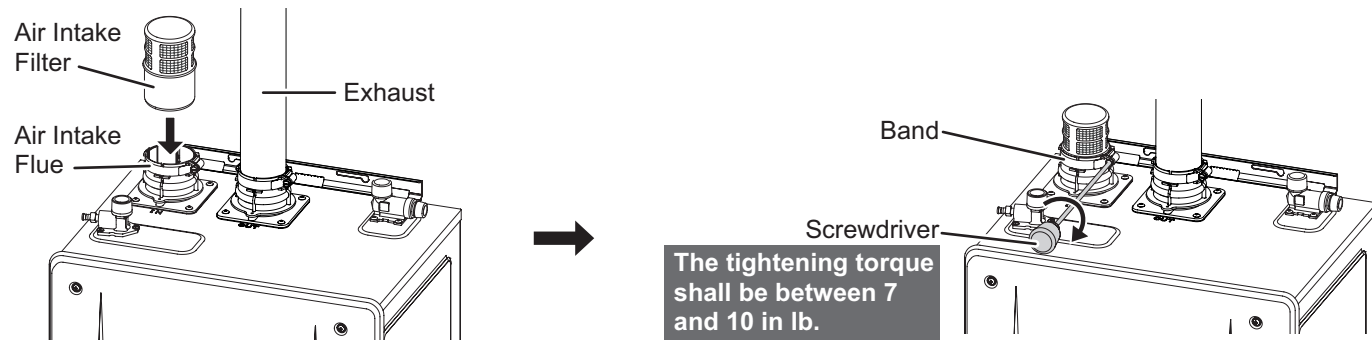


Step 10. Set to SV conversion setting.

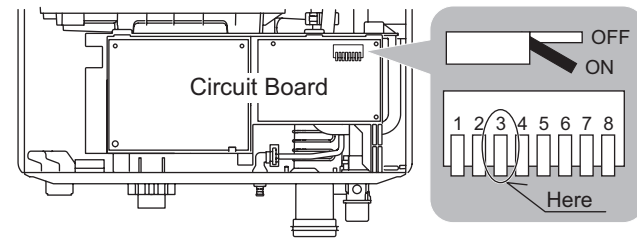


Adjust the exhaust type setting to single vent (SV).

(Example of GQ-C3260 series)

Remove the front cover and adjust the DIP switch.
Disconnect the electrical power and then turn ON DIP switch #3.

Failure to perform this step will result a "73" code displayed on the Remote Controller and a cease in operation.
If this occurs, disconnect, then reconnect the electrical power to the water heater to reset the system.



10 Quick and Easy Steps

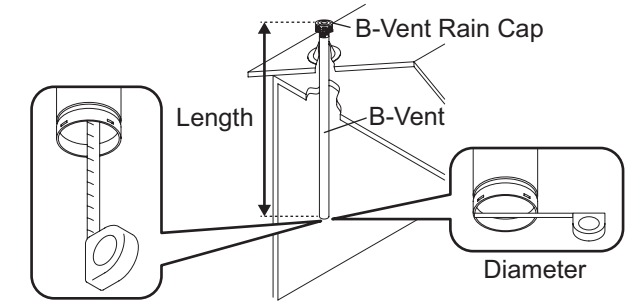
Refer to the installation procedure video by scanning the two-dimensional barcode on the right.
(<https://help.noritz.com/index.php/knowledge-base/nrk-1installation/>)



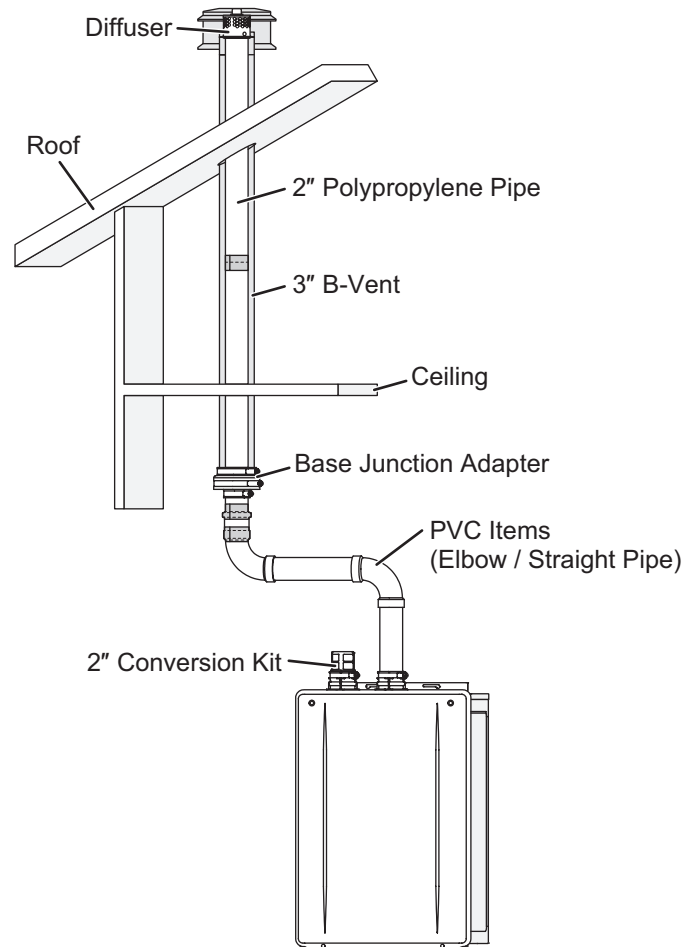
Step 1. Check the condition of installation site.

Please check the installation manual for details.

Step 2. Measure the B-Vent length and diameter.



Completion

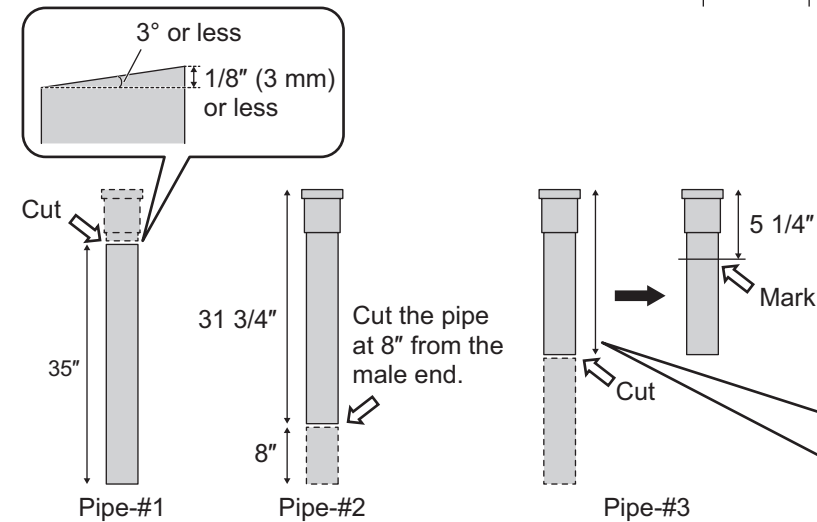


Step 3. Cut the polypropylene pipes to the required length needed for the measured B-Vent.

Example of B-Vent length: 66 1/4"

[Excerpt from the table on the installation manual]

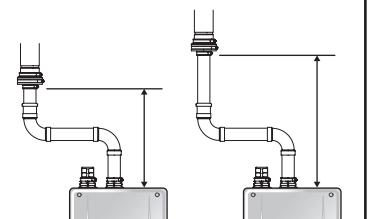
B-Vent length [inch]	Polypropylene pipe length [inch]			
	Pipe-#1	Pipe-#2	Pipe-#3	Mark
66	35	31 3/4	13 1/4 or more	5 1/4
67	35	32 3/4	13 1/4 or more	5 1/4



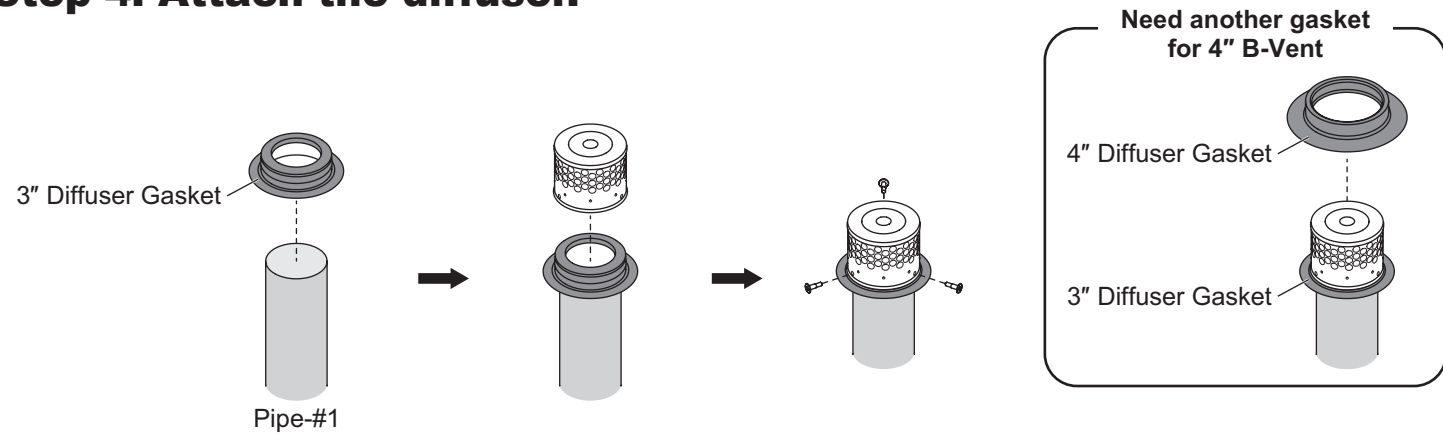
Necessary minimum length: 13 1/4"

- Do not cut pipe shorter than 13 1/4", measured from the female side of the polypropylene pipe. This length should be determined by the actual water heater installation condition such that enough pipe is exposed to attach adapter.

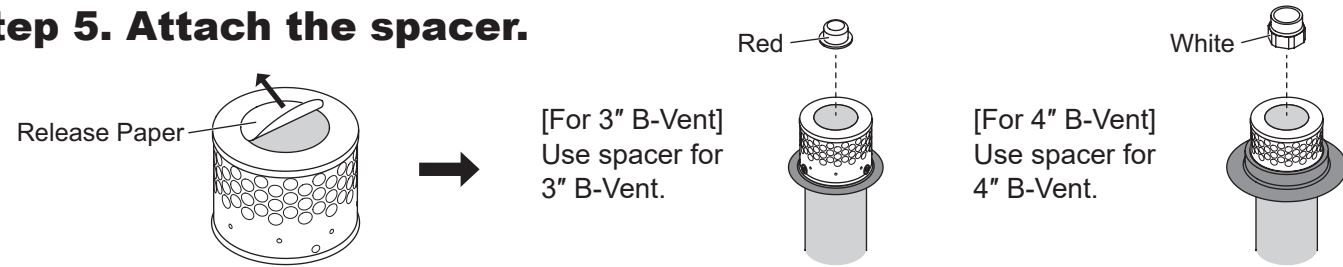
- Determine the length of pipe #3 according to the location of the water heater.



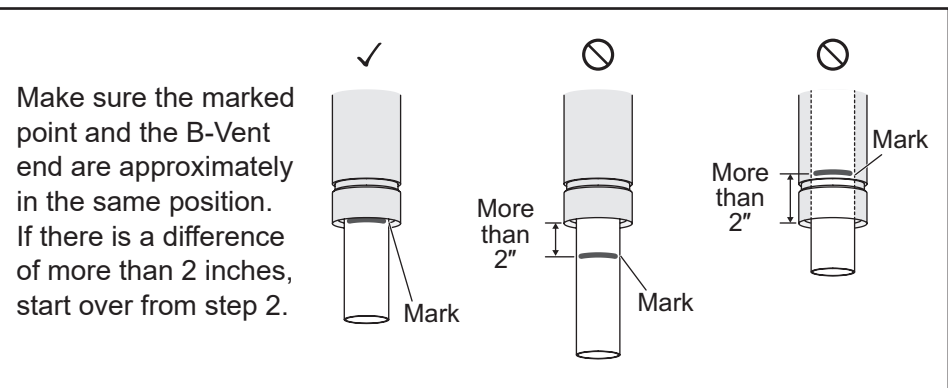
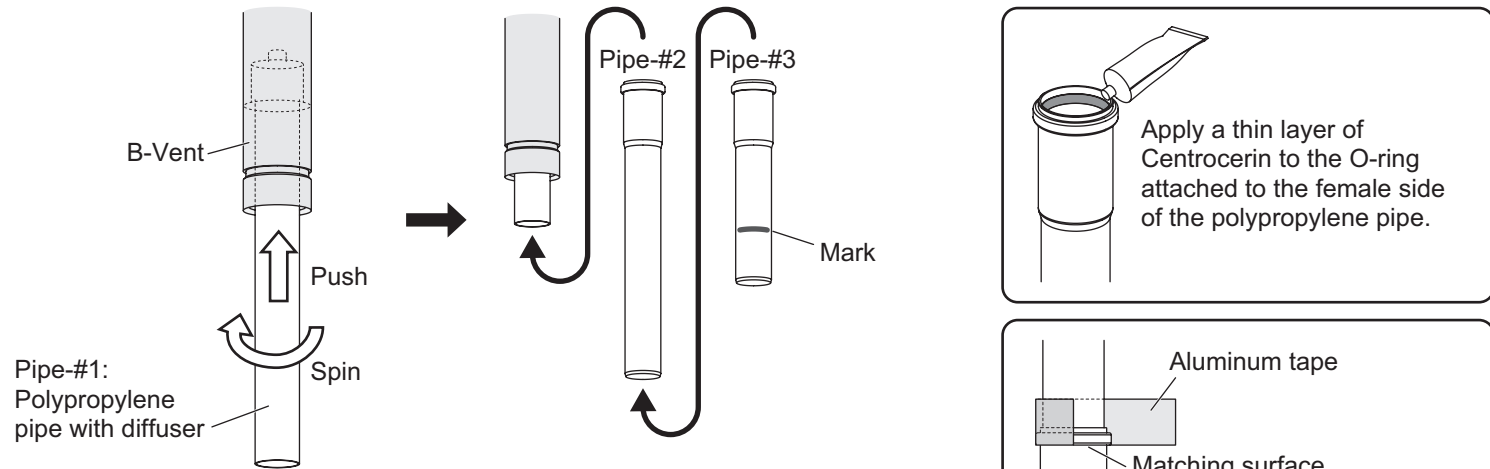
Step 4. Attach the diffuser.



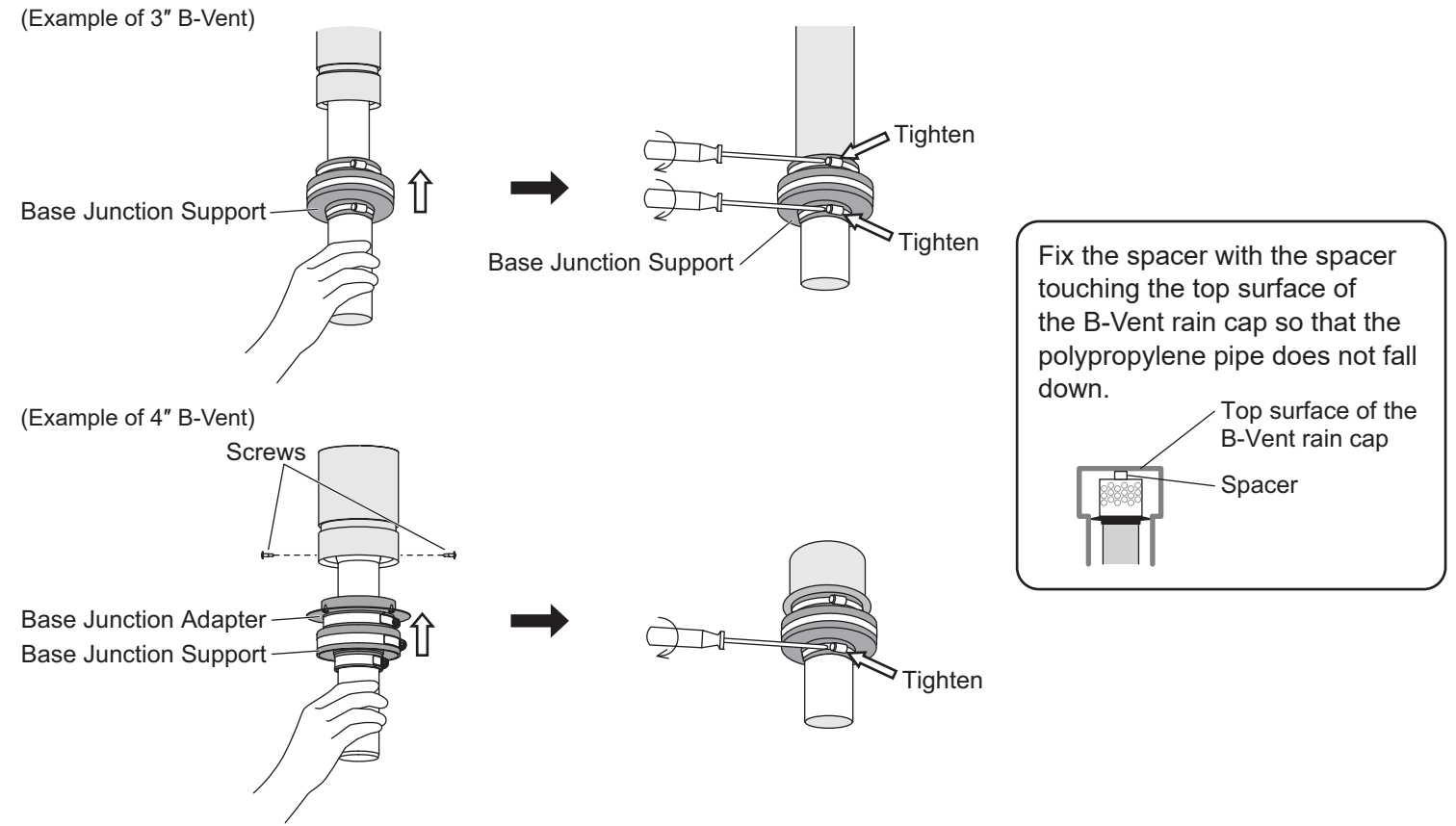
Step 5. Attach the spacer.



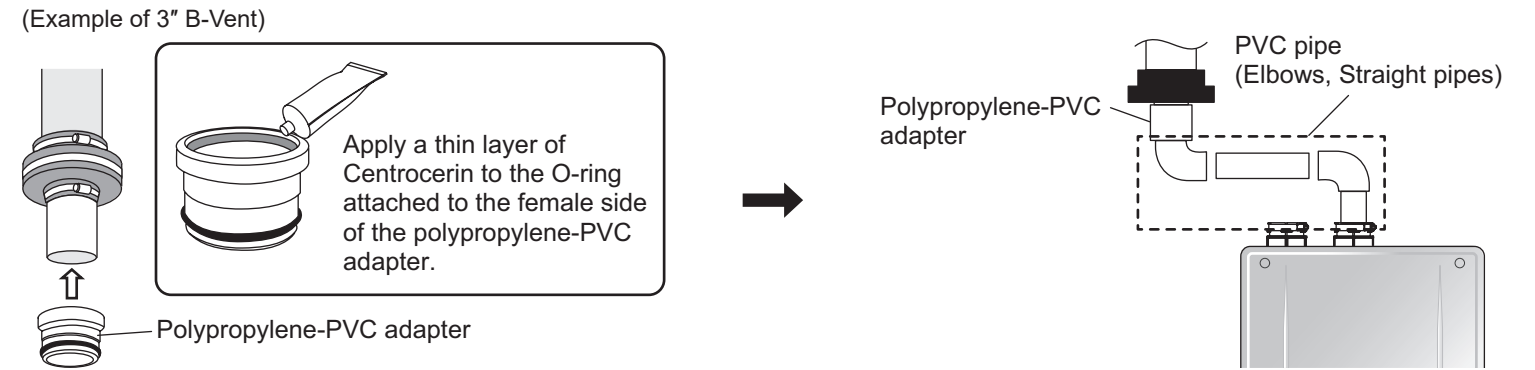
Step 6. Insert the polypropylene pipe into the B-Vent.



Step 7. Attach Base junction support to B-Vent.



Step 8. Connect the vent.



Step 9. Fix the connection with aluminum tape.

